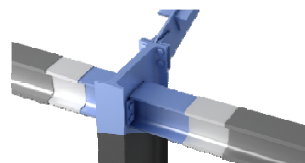


**INNOPAINT**

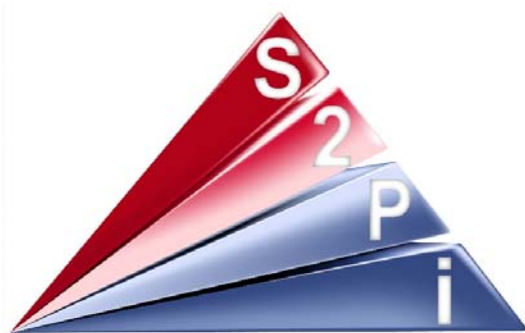
Peinture intumescente  
Mono composant  
A base aqueuse



**PERFORMANCES - Extrait de EVALUATION TECHNIQUE EUROPEENNE - ETE 15/0146 19/03/2016**

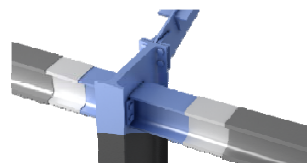
**POUTRE - 3 faces - Profils H-I-U - Epaisseurs sèches appliquées (µm)**

R30	POUTRE - 3 faces Exposées 500°C					POUTRE - 3 faces Exposées 550°C				
	HEA	HEB	IPE	IPN	UPE	HEA	HEB	IPE	IPN	UPE
80	---	---	---	---	214	---	---	---	---	214
100	214	214	---	383	214	214	214	---	214	214
120	214	214	388	368	214	214	214	214	214	214
130	---	---	---	---	---	---	---	---	---	---
140	214	214	378	214	214	214	214	214	214	214
150	---	---	---	---	---	---	---	---	---	---
160	214	214	368	214	214	214	214	214	214	214
175	---	---	---	---	---	---	---	---	---	---
180	214	214	214	214	214	214	214	214	214	214
200	214	214	214	214	214	214	214	214	214	214
220	214	214	214	214	214	214	214	214	214	214
240	214	214	214	214	214	214	214	214	214	214
250	---	---	---	---	---	---	---	---	---	---
260	214	214	---	214	---	214	214	---	214	---
270	---	---	214	---	214	---	---	214	---	214
280	214	214	---	214	---	214	214	---	214	---
300	214	214	214	214	214	214	214	214	214	214
320	214	214	---	214	---	214	214	---	214	---
340	214	214	---	214	---	214	214	---	214	---
360	214	214	214	214	214	214	214	214	214	214
380	---	---	---	214	---	---	---	---	214	---
400	214	214	214	214	214	214	214	214	214	214
425	---	---	---	---	---	---	---	---	---	---
475	---	---	---	---	---	---	---	---	---	---
500	214	214	214	214	---	214	214	214	214	---
550	214	214	214	214	---	214	214	214	214	---
600	214	214	214	214	---	214	214	214	214	---
650	214	214	---	---	---	214	214	---	---	---
700	214	214	---	---	---	214	214	---	---	---
800	214	214	---	---	---	214	214	---	---	---
900	214	214	---	---	---	214	214	---	---	---
1000	214	214	---	---	---	214	214	---	---	---



**INNOPAINT**

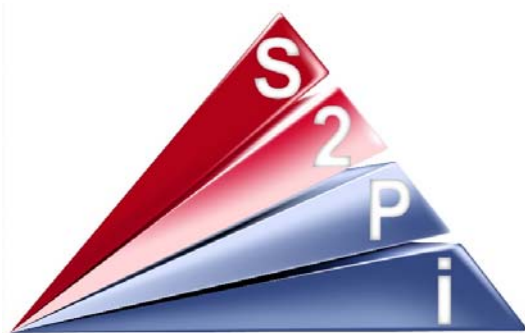
Peinture intumescente  
Mono composant  
A base aqueuse



**PERFORMANCES - Extrait de EVALUATION TECHNIQUE EUROPEENNE - ETE 15/0146 19/03/2016**

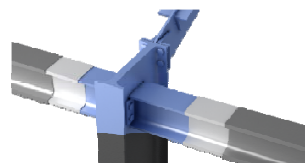
**POUTRE - 3 faces - Profils H-I-U - Epaisseurs sèches appliquées (µm)**

R30	POUTRE - 3 faces Exposées 600°C					POUTRE - 3 faces Exposées 650°C				
	HEA	HEB	IPE	IPN	UPE	HEA	HEB	IPE	IPN	UPE
80	---	---	---	---	214	---	---	---	---	214
100	214	214	---	214	214	214	214	---	214	214
120	214	214	214	214	214	214	214	214	214	214
130	---	---	---	---	---	---	---	---	---	---
140	214	214	214	214	214	214	214	214	214	214
150	---	---	---	---	---	---	---	---	---	---
160	214	214	214	214	214	214	214	214	214	214
175	---	---	---	---	---	---	---	---	---	---
180	214	214	214	214	214	214	214	214	214	214
200	214	214	214	214	214	214	214	214	214	214
220	214	214	214	214	214	214	214	214	214	214
240	214	214	214	214	214	214	214	214	214	214
250	---	---	---	---	---	---	---	---	---	---
260	214	214	---	214	---	214	214	---	214	---
270	---	---	214	---	214	---	---	214	---	214
280	214	214	---	214	---	214	214	---	214	---
300	214	214	214	214	214	214	214	214	214	214
320	214	214	---	214	---	214	214	---	214	---
340	214	214	---	214	---	214	214	---	214	---
360	214	214	214	214	214	214	214	214	214	214
380	---	---	---	214	---	---	---	---	214	---
400	214	214	214	214	214	214	214	214	214	214
425	---	---	---	---	---	---	---	---	---	---
475	---	---	---	---	---	---	---	---	---	---
500	214	214	214	214	---	214	214	214	214	---
550	214	214	214	214	---	214	214	214	214	---
600	214	214	214	214	---	214	214	214	214	---
650	214	214	---	---	---	214	214	---	---	---
700	214	214	---	---	---	214	214	---	---	---
800	214	214	---	---	---	214	214	---	---	---
900	214	214	---	---	---	214	214	---	---	---
1000	214	214	---	---	---	214	214	---	---	---



**INNOPAINT**

Peinture intumescente  
Mono composant  
A base aqueuse



**PERFORMANCES - Extrait de EVALUATION TECHNIQUE EUROPEENNE - ETE 15/0146 19/03/2016**

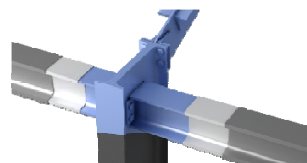
**POUTRE - 3 faces - Profils H-I-U - Epaisseurs sèches appliquées (µm)**

R60	POUTRE - 3 faces Exposées 500°C					POUTRE - 3 faces Exposées 550°C				
	HEA	HEB	IPE	IPN	UPE	HEA	HEB	IPE	IPN	UPE
80	---	---	---	---	1063	---	---	---	---	621
100	1091	876	---	1314	947	680	445	---	949	563
120	1091	830	1342	1230	947	680	398	1013	945	563
130	---	---	---	---	---	---	---	---	---	---
140	1063	785	1286	1146	922	621	358	949	797	504
150	---	---	---	---	---	---	---	---	---	---
160	922	694	1230	1091	876	504	279	945	680	445
175	---	---	---	---	---	---	---	---	---	---
180	922	648	1118	947	830	504	239	739	563	398
200	830	599	1146	922	830	398	214	797	504	398
220	785	599	1091	830	785	358	214	680	398	358
240	739	548	1063	785	739	319	214	621	358	319
250	---	---	---	---	---	---	---	---	---	---
260	694	548	---	739	---	279	214	---	319	---
270	---	---	947	---	694	---	---	563	---	279
280	694	528	---	694	---	279	214	---	279	---
300	648	528	922	648	599	239	214	504	239	214
320	599	528	---	599	---	214	214	---	214	---
340	548	528	---	599	---	214	214	---	214	---
360	548	528	785	548	548	214	214	358	214	214
380	---	---	---	548	---	---	---	---	214	---
400	528	528	739	528	528	214	214	319	214	214
425	---	---	---	---	---	---	---	---	---	---
475	---	---	---	---	---	---	---	---	---	---
500	528	528	648	528	---	214	214	239	214	---
550	528	528	599	528	---	214	214	214	214	---
600	528	528	599	528	---	214	214	214	214	---
650	528	528	---	---	---	214	214	---	---	---
700	528	528	---	---	---	214	214	---	---	---
800	528	528	---	---	---	214	214	---	---	---
900	528	528	---	---	---	214	214	---	---	---
1000	528	528	---	---	---	214	214	---	---	---



**INNOPAINT**

Peinture intumescente  
Mono composant  
A base aqueuse



**PERFORMANCES - Extrait de EVALUATION TECHNIQUE EUROPEENNE - ETE 15/0146 19/03/2016**

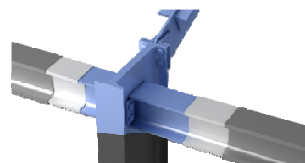
**POUTRE - 3 faces - Profils H-I-U - Epaisseurs sèches appliquées (µm)**

R60	POUTRE - 3 faces Exposées 600°C					POUTRE - 3 faces Exposées 650°C				
	HEA	HEB	IPE	IPN	UPE	HEA	HEB	IPE	IPN	UPE
80	---	---	---	---	673	---	---	---	---	621
100	769	557	---	1125	617	680	445	---	949	563
120	769	527	1153	1040	617	680	398	1013	945	563
130	---	---	---	---	---	---	---	---	---	---
140	673	497	1097	926	587	621	358	949	797	504
150	---	---	---	---	---	---	---	---	---	---
160	587	437	1040	769	557	504	279	945	680	445
175	---	---	---	---	---	---	---	---	---	---
180	587	356	865	617	527	504	239	739	563	398
200	527	223	926	587	527	398	214	797	504	398
220	497	223	769	527	497	358	214	680	398	358
240	467	214	673	497	467	319	214	621	358	319
250	---	---	---	---	---	---	---	---	---	---
260	437	214	---	467	---	279	214	---	319	---
270	---	---	617	---	437	---	---	563	---	279
280	437	214	---	437	---	279	214	---	279	---
300	356	214	587	356	223	239	214	504	239	214
320	223	214	---	223	---	214	214	---	214	---
340	214	214	---	223	---	214	214	---	214	---
360	214	214	497	214	214	214	214	358	214	214
380	---	---	---	214	---	---	---	---	214	---
400	214	214	467	214	214	214	214	319	214	214
425	---	---	---	---	---	---	---	---	---	---
475	---	---	---	---	---	---	---	---	---	---
500	214	214	356	214	---	214	214	239	214	---
550	214	214	223	214	---	214	214	214	214	---
600	214	214	223	214	---	214	214	214	214	---
650	214	214	---	---	---	214	214	---	---	---
700	214	214	---	---	---	214	214	---	---	---
800	214	214	---	---	---	214	214	---	---	---
900	214	214	---	---	---	214	214	---	---	---
1000	214	214	---	---	---	214	214	---	---	---



**INNOPAINT**

Peinture intumescente  
Mono composant  
A base aqueuse



**PERFORMANCES - Extrait de EVALUATION TECHNIQUE EUROPEENNE - ETE 15/0146 19/03/2016**

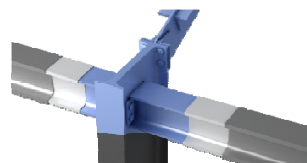
**POUTRE - 3 faces - Profils H-I-U - Epaisseurs sèches appliquées (µm)**

R90	POUTRE - 3 faces Exposées 500°C					POUTRE - 3 faces Exposées 550°C				
	HEA	HEB	IPE	IPN	UPE	HEA	HEB	IPE	IPN	UPE
80	---	---	---	---	---	---	---	---	---	1219
100	---	---	---	---	---	---	1068	---	---	1169
120	---	---	---	---	---	---	1017	---	---	1169
130	---	---	---	---	---	---	---	---	---	---
140	---	---	---	---	---	---	967	---	1381	1118
150	---	---	---	---	---	---	---	---	---	---
160	---	---	---	---	---	---	866	---	1270	1068
175	---	---	---	---	---	---	---	---	---	---
180	---	---	---	---	---	---	815	1323	1169	1017
200	---	---	---	---	---	---	779	1381	1118	1017
220	---	---	---	---	---	---	779	1270	1017	967
240	---	---	---	---	---	---	748	1219	967	916
250	---	---	---	---	---	---	---	---	---	---
260	---	---	---	---	---	---	748	---	916	---
270	---	---	---	---	---	---	---	1169	---	866
280	---	---	---	---	---	---	718	---	866	---
300	---	---	---	---	---	---	718	1118	815	779
320	---	1405	---	---	---	---	709	---	779	---
340	---	1405	---	---	---	---	709	---	779	---
360	---	1405	---	---	---	---	709	967	748	748
380	---	---	---	---	---	---	---	---	748	---
400	---	1142	---	---	---	---	700	916	718	718
425	---	---	---	---	---	---	---	---	---	---
475	---	---	---	---	---	---	---	---	---	---
500	1405	1142	---	1142	---	1405	700	815	700	---
550	1405	1142	---	1142	---	1405	700	779	700	---
600	1405	1142	---	879	---	1405	700	779	557	---
650	1405	879	---	---	---	1405	557	---	---	---
700	1405	879	---	---	---	1405	557	---	---	---
800	1142	879	---	---	---	1142	557	---	---	---
900	1142	879	---	---	---	1142	557	---	---	---
1000	1142	879	---	---	---	1142	557	---	---	---



**INNOPAINT**

Peinture intumescente  
Mono composant  
A base aqueuse



**PERFORMANCES - Extrait de EVALUATION TECHNIQUE EUROPEENNE - ETE 15/0146 19/03/2016**

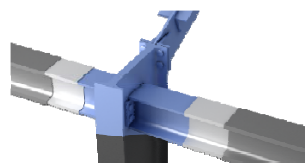
**POUTRE - 3 faces - Profils H-I-U - Epaisseurs sèches appliquées (µm)**

R90	POUTRE - 3 faces Exposées 600°C					POUTRE - 3 faces Exposées 650°C				
	HEA	HEB	IPE	IPN	UPE	HEA	HEB	IPE	IPN	UPE
80	---	---	---	---	---	---	---	---	---	1219
100	---	---	---	---	---	1270	1068	---	---	1169
120	---	1408	---	---	---	1270	1017	---	---	1169
130	---	---	---	---	---	---	---	---	---	---
140	---	1325	---	---	---	1219	967	---	1381	1118
150	---	---	---	---	---	---	---	---	---	---
160	---	1137	---	---	---	1118	866	---	1270	1068
175	---	---	---	---	---	---	---	---	---	---
180	---	1040	---	---	1408	1118	815	1323	1169	1017
200	1408	944	---	---	1408	1017	779	1381	1118	1017
220	1325	944	---	1408	1325	967	779	1270	1017	967
240	1233	848	---	1325	1233	916	748	1219	967	916
250	---	---	---	---	---	---	---	---	---	---
260	1137	848	---	1233	---	866	748	---	916	---
270	---	---	---	---	1137	---	---	1169	---	866
280	1137	782	---	1137	---	866	718	---	866	---
300	1040	782	---	1040	944	815	718	1118	815	779
320	944	745	---	944	---	779	709	---	779	---
340	848	745	---	944	---	748	709	---	779	---
360	848	745	1325	848	848	748	709	967	748	748
380	---	---	---	848	---	---	---	---	748	---
400	782	700	1233	782	782	718	700	916	718	718
425	---	---	---	---	---	---	---	---	---	---
475	---	---	---	---	---	---	---	---	---	---
500	745	700	1040	700	---	709	700	815	700	---
550	745	700	944	700	---	709	700	779	700	---
600	745	700	944	557	---	709	700	779	557	---
650	745	557	---	---	---	709	557	---	---	---
700	745	557	---	---	---	709	557	---	---	---
800	700	557	---	---	---	700	557	---	---	---
900	700	557	---	---	---	700	557	---	---	---
1000	700	557	---	---	---	700	557	---	---	---



**INNOPAINT**

Peinture intumescente  
Mono composant  
A base aqueuse



**PERFORMANCES - Extrait de EVALUATION TECHNIQUE EUROPEENNE - ETE 15/0146 19/03/2016**

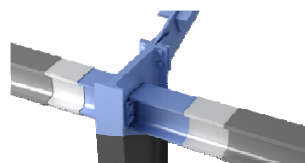
**POTEAU - 3 faces - Profils H-I-U - Epaisseurs sèches appliquées (µm)**

R30	POTEAU - 3 faces exposées 500°C					POTEAU - 3 faces exposées 550°C				
	HEA	HEB	IPE	IPN	UPE	HEA	HEB	IPE	IPN	UPE
80	---	---	---	---	329	---	---	---	---	221
100	336	306	---	385	322	221	221	---	221	221
120	336	297	390	368	322	221	221	221	221	221
130	---	---	---	---	---	---	---	---	---	---
140	329	289	380	350	314	221	221	221	221	221
150	---	---	---	---	---	---	---	---	---	---
160	314	270	368	336	306	221	221	221	221	221
175	---	---	---	---	---	---	---	---	---	---
180	314	260	343	322	297	221	221	221	221	221
200	297	249	350	314	297	221	221	221	221	221
220	289	249	336	297	289	221	221	221	221	221
240	279	238	329	289	279	221	221	221	221	221
250	---	---	---	---	---	---	---	---	---	---
260	270	238	---	279	---	221	221	---	221	---
270	---	---	322	---	270	---	---	221	---	221
280	270	226	---	270	---	221	221	---	221	---
300	260	226	314	260	249	221	221	221	221	221
320	249	221	---	249	---	221	221	---	221	---
340	238	221	---	249	---	221	221	---	221	---
360	238	221	289	238	238	221	221	221	221	221
380	---	---	---	238	---	---	---	---	221	---
400	226	221	279	226	226	221	221	221	221	221
425	---	---	---	---	---	---	---	---	---	---
475	---	---	---	---	---	---	---	---	---	---
500	221	221	260	221	---	221	221	221	221	---
550	221	221	249	221	---	221	221	221	221	---
600	221	221	249	221	---	221	221	221	221	---
650	221	221	---	---	---	221	221	---	---	---
700	221	221	---	---	---	221	221	---	---	---
800	221	221	---	---	---	221	221	---	---	---
900	221	221	---	---	---	221	221	---	---	---
1000	221	221	---	---	---	221	221	---	---	---



**INNOPAINT**

Peinture intumescente  
Mono composant  
A base aqueuse



**PERFORMANCES - Extrait de EVALUATION TECHNIQUE EUROPEENNE - ETE 15/0146 19/03/2016**

**POTEAU - 3 faces - Profils H-I-U - Epaisseurs sèches appliquées (µm)**

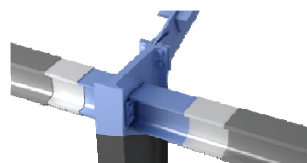
R30	POTEAU - 3 faces exposées 600°C					POTEAU - 3 faces exposées 650°C				
	HEA	HEB	IPE	IPN	UAP	HEA	HEB	IPE	IPN	UAP
80	---	---	---	---	221	---	---	---	---	221
100	221	221	---	221	221	221	221	---	221	221
120	221	221	221	221	221	221	221	221	221	221
130	---	---	---	---	---	---	---	---	---	---
140	221	221	221	221	221	221	221	221	221	221
150	---	---	---	---	---	---	---	---	---	---
160	221	221	221	221	221	221	221	221	221	221
175	---	---	---	---	---	---	---	---	---	---
180	221	221	221	221	221	221	221	221	221	221
200	221	221	221	221	221	221	221	221	221	221
220	221	221	221	221	221	221	221	221	221	221
240	221	221	221	221	221	221	221	221	221	221
250	---	---	---	---	---	---	---	---	---	---
260	221	221	---	221	---	221	221	---	221	---
270	---	---	221	---	221	---	---	221	---	221
280	221	221	---	221	---	221	221	---	221	---
300	221	221	221	221	221	221	221	221	221	221
320	221	221	---	221	---	221	221	---	221	---
340	221	221	---	221	---	221	221	---	221	---
360	221	221	221	221	221	221	221	221	221	221
380	---	---	---	221	---	---	---	---	221	---
400	221	221	221	221	221	221	221	221	221	221
425	---	---	---	---	---	---	---	---	---	---
475	---	---	---	---	---	---	---	---	---	---
500	221	221	221	221	---	221	221	221	221	---
550	221	221	221	221	---	221	221	221	221	---
600	221	221	221	221	---	221	221	221	221	---
650	221	221	---	---	---	221	221	---	---	---
700	221	221	---	---	---	221	221	---	---	---
800	221	221	---	---	---	221	221	---	---	---
900	221	221	---	---	---	221	221	---	---	---
1000	221	221	---	---	---	221	221	---	---	---





**INNOPAINT**

Peinture intumescente  
Mono composant  
A base aqueuse



**PERFORMANCES - Extrait de EVALUATION TECHNIQUE EUROPEENNE - ETE 15/0146 19/03/2016**

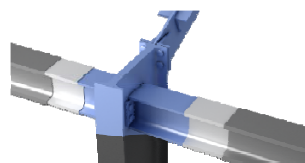
**POTEAU - 3 faces - Profils H-I-U - Epaisseurs sèches appliquées (µm)**

R60	POTEAU - 3 faces exposées 500°C					POTEAU - 3 faces exposées 550°C				
	HEA	HEB	IPE	IPN	UPE	HEA	HEB	IPE	IPN	UPE
80	---	---	---	---	1063	---	---	---	---	961
100	1091	979	---	1314	1035	989	879	---	1207	934
120	1091	951	1342	1230	1035	989	852	1234	1125	934
130	---	---	---	---	---	---	---	---	---	---
140	1063	923	1286	1146	1007	961	825	1180	1043	907
150	---	---	---	---	---	---	---	---	---	---
160	1007	867	1230	1091	979	907	768	1125	989	879
175	---	---	---	---	---	---	---	---	---	---
180	1007	839	1118	1035	951	907	738	1016	934	852
200	951	811	1146	1007	951	852	709	1043	907	852
220	923	811	1091	951	923	825	709	989	852	825
240	895	779	1063	923	895	797	679	961	825	797
250	---	---	---	---	---	---	---	---	---	---
260	867	779	---	895	---	768	679	---	797	---
270	---	---	1035	---	867	---	---	934	---	768
280	867	743	---	867	---	768	650	---	768	---
300	839	743	1007	839	811	738	650	907	738	709
320	811	707	---	811	---	709	621	---	709	---
340	779	707	---	811	---	679	621	---	709	---
360	779	707	923	779	779	679	621	825	679	679
380	---	---	---	779	---	---	---	---	679	---
400	743	671	895	743	743	650	591	797	650	650
425	---	---	---	---	---	---	---	---	---	---
475	---	---	---	---	---	---	---	---	---	---
500	707	671	839	671	---	621	591	738	591	---
550	707	671	811	671	---	621	591	709	591	---
600	707	671	811	636	---	621	591	709	562	---
650	707	636	---	---	---	621	562	---	---	---
700	707	636	---	---	---	621	562	---	---	---
800	671	636	---	---	---	591	562	---	---	---
900	671	636	---	---	---	591	562	---	---	---
1000	671	636	---	---	---	591	562	---	---	---



**INNOPAINT**

Peinture intumescente  
Mono composant  
A base aqueuse



**PERFORMANCES - Extrait de EVALUATION TECHNIQUE EUROPEENNE - ETE 15/0146 19/03/2016**

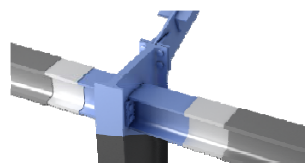
**POTEAU - 3 faces - Profils H-I-U - Epaisseurs sèches appliquées (µm)**

R60	POTEAU - 3 faces exposées 600°C					POTEAU - 3 faces exposées 650°C				
	HEA	HEB	IPE	IPN	UAP	HEA	HEB	IPE	IPN	UAP
80	---	---	---	---	871	---	---	---	---	648
100	899	786	---	1125	842	743	557	---	988	591
120	899	757	1153	1040	842	743	540	1013	912	591
130	---	---	---	---	---	---	---	---	---	---
140	871	728	1097	955	814	648	523	962	836	574
150	---	---	---	---	---	---	---	---	---	---
160	814	670	1040	899	786	574	489	912	743	557
175	---	---	---	---	---	---	---	---	---	---
180	814	641	927	842	757	574	472	810	591	540
200	757	612	955	814	757	540	455	836	574	540
220	728	612	899	757	728	523	455	743	540	523
240	699	590	871	728	699	506	438	648	523	506
250	---	---	---	---	---	---	---	---	---	---
260	670	590	---	699	---	489	438	---	506	---
270	---	---	842	---	670	---	---	591	---	489
280	670	572	---	670	---	489	421	---	489	---
300	641	572	814	641	612	472	421	574	472	455
320	612	555	---	612	---	455	404	---	455	---
340	590	555	---	612	---	438	404	---	455	---
360	590	555	728	590	590	438	404	523	438	438
380	---	---	---	590	---	---	---	---	438	---
400	572	537	699	572	572	421	387	506	421	421
425	---	---	---	---	---	---	---	---	---	---
475	---	---	---	---	---	---	---	---	---	---
500	555	537	641	537	---	404	387	472	387	---
550	555	537	612	537	---	404	387	455	387	---
600	555	537	612	520	---	404	387	455	370	---
650	555	520	---	---	---	404	370	---	---	---
700	555	520	---	---	---	404	370	---	---	---
800	537	520	---	---	---	387	370	---	---	---
900	537	520	---	---	---	387	370	---	---	---
1000	537	520	---	---	---	387	370	---	---	---



**INNOPAINT**

Peinture intumescente  
Mono composant  
A base aqueuse



**PERFORMANCES - Extrait de EVALUATION TECHNIQUE EUROPEENNE - ETE 15/0146 19/03/2016**

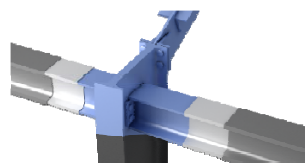
**POTEAU - 3 faces - Profils H-I-U - Epaisseurs sèches appliquées (µm)**

R90	POTEAU - 3 faces exposées 500°C					POTEAU - 3 faces exposées 550°C				
	HEA	HEB	IPE	IPN	UPE	HEA	HEB	IPE	IPN	UPE
80	---	---	---	---	---	---	---	---	---	---
100	---	---	---	---	---	---	---	---	---	---
120	---	---	---	---	---	---	---	---	---	---
130	---	---	---	---	---	---	---	---	---	---
140	---	---	---	---	---	---	---	---	---	---
150	---	---	---	---	---	---	---	---	---	---
160	---	---	---	---	---	---	---	---	---	---
175	---	---	---	---	---	---	---	---	---	---
180	---	---	---	---	---	---	1414	---	---	---
200	---	---	---	---	---	---	1271	---	---	---
220	---	---	---	---	---	---	1271	---	---	---
240	---	---	---	---	---	---	1129	---	---	---
250	---	---	---	---	---	---	---	---	---	---
260	---	---	---	---	---	---	1129	---	---	---
270	---	---	---	---	---	---	---	---	---	---
280	---	---	---	---	---	---	986	---	---	---
300	---	---	---	---	---	1414	986	---	1414	1271
320	---	1405	---	---	---	1271	843	---	1271	---
340	---	1405	---	---	---	1129	843	---	1271	---
360	---	1405	---	---	---	1129	843	---	1129	1129
380	---	---	---	---	---	---	---	---	1129	---
400	---	1142	---	---	---	986	700	---	986	986
425	---	---	---	---	---	---	---	---	---	---
475	---	---	---	---	---	---	---	---	---	---
500	1405	1142	---	1142	---	843	700	1414	700	---
550	1405	1142	---	1142	---	843	700	1271	700	---
600	1405	1142	---	879	---	843	700	1271	557	---
650	1405	879	---	---	---	843	557	---	---	---
700	1405	879	---	---	---	843	557	---	---	---
800	1142	879	---	---	---	700	557	---	---	---
900	1142	879	---	---	---	700	557	---	---	---
1000	1142	879	---	---	---	700	557	---	---	---



**INNOPAINT**

Peinture intumescente  
Mono composant  
A base aqueuse



**PERFORMANCES - Extrait de EVALUATION TECHNIQUE EUROPEENNE - ETE 15/0146 19/03/2016**

**POTEAU - 3 faces - Profils H-I-U - Epaisseurs sèches appliquées (µm)**

R90	POTEAU - 3 faces exposées 600°C					POTEAU - 3 faces exposées 650°C				
	HEA	HEB	IPE	IPN	UAP	HEA	HEB	IPE	IPN	UAP
80	---	---	---	---	---	---	---	---	---	1219
100	---	---	---	---	---	1270	1068	---	---	1169
120	---	1408	---	---	---	1270	1017	---	---	1169
130	---	---	---	---	---	---	---	---	---	---
140	---	1325	---	---	---	1219	967	---	1381	1118
150	---	---	---	---	---	---	---	---	---	---
160	---	1137	---	---	---	1118	866	---	1270	1068
175	---	---	---	---	---	---	---	---	---	---
180	---	1040	---	---	1408	1118	815	1323	1169	1017
200	1408	944	---	---	1408	1017	779	1381	1118	1017
220	1325	944	---	1408	1325	967	779	1270	1017	967
240	1233	848	---	1325	1233	916	748	1219	967	916
250	---	---	---	---	---	---	---	---	---	---
260	1137	848	---	1233	---	866	748	---	916	---
270	---	---	---	---	1137	---	---	1169	---	866
280	1137	782	---	1137	---	866	718	---	866	---
300	1040	782	---	1040	944	815	718	1118	815	779
320	944	745	---	944	---	779	709	---	779	---
340	848	745	---	944	---	748	709	---	779	---
360	848	745	1325	848	848	748	709	967	748	748
380	---	---	---	848	---	---	---	---	748	---
400	782	700	1233	782	782	718	700	916	718	718
425	---	---	---	---	---	---	---	---	---	---
475	---	---	---	---	---	---	---	---	---	---
500	745	700	1040	700	---	709	700	815	700	---
550	745	700	944	700	---	709	700	779	700	---
600	745	700	944	557	---	709	700	779	557	---
650	745	557	---	---	---	709	557	---	---	---
700	745	557	---	---	---	709	557	---	---	---
800	700	557	---	---	---	700	557	---	---	---
900	700	557	---	---	---	700	557	---	---	---
1000	700	557	---	---	---	700	557	---	---	---