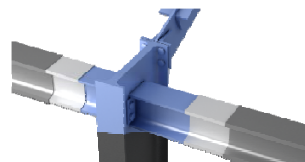


INNOPAINT

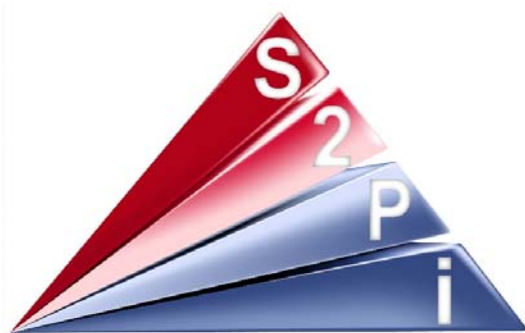
Peinture intumescente
Mono composant
A base aqueuse



PERFORMANCES - Extrait de EVALUATION TECHNIQUE EUROPEENNE - ETE 15/0146 19/03/2016

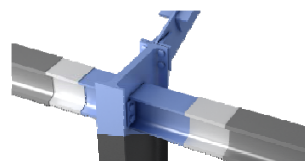
POUTRE - 4 faces - Profils H-I-U - Epaisseurs sèches appliquées (µm)

R30	POUTRE - 4 faces Exposées 500°C					POUTRE - 4 faces Exposées 550°C				
	HEA	HEB	IPE	IPN	UPE	HEA	HEB	IPE	IPN	UPE
80	---	---	---	---	216	---	---	---	---	214
100	216	214	---	---	214	214	214	---	---	214
120	368	214	---	388	214	214	214	---	214	214
130	---	---	---	---	---	---	---	---	---	---
140	214	214	---	368	214	214	214	---	214	214
150	---	---	---	---	---	---	---	---	---	---
160	214	214	388	214	214	214	214	214	214	214
175	---	---	---	---	---	---	---	---	---	---
180	214	214	378	214	214	214	214	214	214	214
200	214	214	368	214	214	214	214	214	214	214
220	214	214	214	214	214	214	214	214	214	214
240	214	214	214	214	214	214	214	214	214	214
250	---	---	---	---	---	---	---	---	---	---
260	214	214	---	214	---	214	214	---	214	---
270	---	---	214	---	214	---	---	214	---	214
280	214	214	---	214	---	214	214	---	214	---
300	214	214	214	214	214	214	214	214	214	214
320	214	214	---	214	---	214	214	---	214	---
340	214	214	---	214	---	214	214	---	214	---
360	214	214	214	214	214	214	214	214	214	214
380	---	---	---	214	---	---	---	---	214	---
400	214	214	214	214	214	214	214	214	214	214
425	---	---	---	---	---	---	---	---	---	---
475	---	---	---	---	---	---	---	---	---	---
500	214	214	214	214	---	214	214	214	214	---
550	214	214	214	214	---	214	214	214	214	---
600	214	214	214	214	---	214	214	214	214	---
650	214	214	---	---	---	214	214	---	---	---
700	214	214	---	---	---	214	214	---	---	---
800	214	214	---	---	---	214	214	---	---	---
900	214	214	---	---	---	214	214	---	---	---
1000	214	214	---	---	---	214	214	---	---	---



INNOPAINT

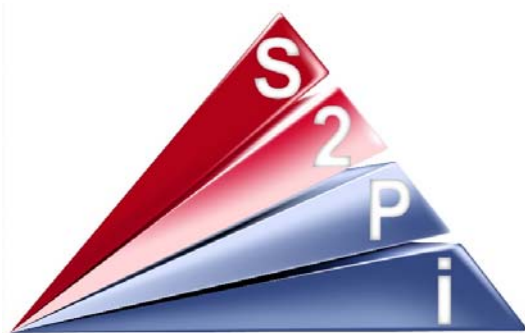
Peinture intumescente
Mono composant
A base aqueuse



PERFORMANCES - Extrait de EVALUATION TECHNIQUE EUROPEENNE - ETE 15/0146 19/03/2016

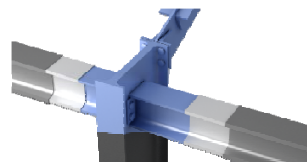
POUTRE - 4 faces - Profils H-I-U - Epaisseurs sèches appliquées (µm)

R30	POUTRE - 4 faces Exposées 600°C					POUTRE - 4 faces Exposées 650°C				
	HEA	HEB	IPE	IPN	UPE	HEA	HEB	IPE	IPN	UPE
80	214	---	---	---	214	---	---	---	---	214
100	214	214	---	---	214	214	214	---	---	214
120	214	214	---	214	214	214	214	---	214	214
130	---	---	---	---	---	---	---	---	---	---
140	214	214	---	214	214	214	214	---	214	214
150	---	---	---	---	---	---	---	---	---	---
160	214	214	214	214	214	214	214	214	214	214
175	---	---	---	---	---	---	---	---	---	---
180	214	214	214	214	214	214	214	214	214	214
200	214	214	214	214	214	214	214	214	214	214
220	214	214	214	214	214	214	214	214	214	214
240	214	214	214	214	214	214	214	214	214	214
250	---	---	---	---	---	---	---	---	---	---
260	214	214	---	214	---	214	214	---	214	---
270	---	---	214	---	214	---	---	214	---	214
280	214	214	---	214	---	214	214	---	214	---
300	214	214	214	214	214	214	214	214	214	214
320	214	214	---	214	---	214	214	---	214	---
340	214	214	---	214	---	214	214	---	214	---
360	214	214	214	214	214	214	214	214	214	214
380	---	---	---	214	---	---	---	---	214	---
400	214	214	214	214	214	214	214	214	214	214
425	---	---	---	---	---	---	---	---	---	---
475	---	---	---	---	---	---	---	---	---	---
500	214	214	214	214	---	214	214	214	214	---
550	214	214	214	214	---	214	214	214	214	---
600	214	214	214	214	---	214	214	214	214	---
650	214	214	---	---	---	214	214	---	---	---
700	214	214	---	---	---	214	214	---	---	---
800	214	214	---	---	---	214	214	---	---	---
900	214	214	---	---	---	214	214	---	---	---
1000	214	214	---	---	---	214	214	---	---	---



INNOPAINT

Peinture intumescente
Mono composant
A base aqueuse



PERFORMANCES - Extrait de EVALUATION TECHNIQUE EUROPEENNE - ETE 15/0146 19/03/2016

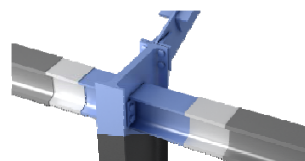
POUTRE - 4 faces - Profils H-I-U - Epaisseurs sèches appliquées (µm)

R60	POUTRE - 4 faces Exposées 500°C					POUTRE - 4 faces Exposées 550°C				
	HEA	HEB	IPE	IPN	UPE	HEA	HEB	IPE	IPN	UPE
80	---	---	---	---	1202	---	---	---	---	1098
100	1202	1091	---	---	1174	1098	911	---	---	1070
120	1230	947	---	1342	1118	1125	826	---	1234	1016
130	---	---	---	---	---	---	---	---	---	---
140	1174	922	---	1230	1091	1070	784	---	1125	911
150	---	---	---	---	---	---	---	---	---	---
160	1118	830	1342	1174	1063	1016	699	1234	1070	869
175	---	---	---	---	---	---	---	---	---	---
180	1118	785	1286	1118	947	1016	656	1180	1016	826
200	1063	739	1230	1063	922	869	610	1125	869	784
220	947	694	1174	947	876	826	562	1070	826	741
240	876	648	1146	876	830	741	520	1043	741	699
250	---	---	---	---	---	---	---	---	---	---
260	830	648	---	830	---	699	520	---	699	---
270	---	---	1118	---	785	---	---	1016	---	656
280	830	599	---	785	---	699	474	---	656	---
300	739	599	1091	739	694	610	474	911	610	562
320	694	548	---	694	---	562	428	---	562	---
340	648	548	---	648	---	520	428	---	520	---
360	648	528	922	648	599	520	410	784	520	474
380	---	---	---	599	---	---	---	---	474	---
400	599	528	830	548	548	474	410	699	428	428
425	---	---	---	---	---	---	---	---	---	---
475	---	---	---	---	---	---	---	---	---	---
500	548	528	739	528	---	428	410	610	410	---
550	528	528	694	528	---	410	410	562	410	---
600	528	528	648	528	---	410	410	520	410	---
650	528	528	---	---	---	410	410	---	---	---
700	528	528	---	---	---	410	410	---	---	---
800	528	528	---	---	---	410	410	---	---	---
900	528	528	---	---	---	410	410	---	---	---
1000	528	528	---	---	---	410	410	---	---	---



INNOPAINT

Peinture intumescente
Mono composant
A base aqueuse



PERFORMANCES - Extrait de EVALUATION TECHNIQUE EUROPEENNE - ETE 15/0146 19/03/2016

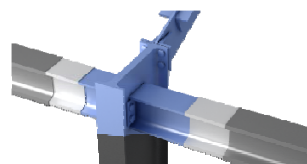
POUTRE - 4 faces - Profils H-I-U - Epaisseurs sèches appliquées (µm)

R60	POUTRE - 4 faces Exposées 600°C					POUTRE - 4 faces Exposées 650°C				
	HEA	HEB	IPE	IPN	UPE	HEA	HEB	IPE	IPN	UPE
80	---	---	---	---	1012	---	---	---	---	910
100	1012	769	---	---	984	910	680	---	---	856
120	1040	617	---	1153	865	945	563	---	1013	739
130	---	---	---	---	---	---	---	---	---	---
140	984	587	---	1040	769	856	504	---	945	680
150	---	---	---	---	---	---	---	---	---	---
160	865	527	1153	984	673	739	398	1013	856	621
175	---	---	---	---	---	---	---	---	---	---
180	865	497	1097	865	617	739	358	949	739	563
200	673	467	1040	673	587	621	319	945	621	504
220	617	437	984	617	557	563	279	856	563	445
240	557	356	926	557	527	445	239	797	445	398
250	---	---	---	---	---	---	---	---	---	---
260	527	356	---	527	---	398	239	---	398	---
270	---	---	865	---	497	---	---	739	---	358
280	527	223	---	497	---	398	214	---	358	---
300	467	223	769	467	437	319	214	680	319	279
320	437	214	---	437	---	279	214	---	279	---
340	356	214	---	356	---	239	214	---	239	---
360	356	214	587	356	223	239	214	504	239	214
380	---	---	---	223	---	---	---	---	214	---
400	223	214	527	214	214	214	214	398	214	214
425	---	---	---	---	---	---	---	---	---	---
475	---	---	---	---	---	---	---	---	---	---
500	214	214	467	214	---	214	214	319	214	---
550	214	214	437	214	---	214	214	279	214	---
600	214	214	356	214	---	214	214	239	214	---
650	214	214	---	---	---	214	214	---	---	---
700	214	214	---	---	---	214	214	---	---	---
800	214	214	---	---	---	214	214	---	---	---
900	214	214	---	---	---	214	214	---	---	---
1000	214	214	---	---	---	214	214	---	---	---



INNOPAINT

Peinture intumescente
Mono composant
A base aqueuse



PERFORMANCES - Extrait de EVALUATION TECHNIQUE EUROPEENNE - ETE 15/0146 19/03/2016

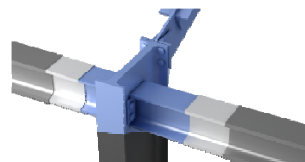
POUTRE - 4 faces - Profils H-I-U - Epaisseurs sèches appliquées (µm)

R90	POUTRE - 4 faces Exposées 500°C					POUTRE - 4 faces Exposées 550°C				
	HEA	HEB	IPE	IPN	UPE	HEA	HEB	IPE	IPN	UPE
80	---	---	---	---	---	---	---	---	---	---
100	---	---	---	---	---	---	---	---	---	---
120	---	---	---	---	---	---	---	---	---	---
130	---	---	---	---	---	---	---	---	---	---
140	---	---	---	---	---	---	---	---	---	---
150	---	---	---	---	---	---	---	---	---	---
160	---	---	---	---	---	---	---	---	---	---
175	---	---	---	---	---	---	---	---	---	---
180	---	---	---	---	---	---	---	---	---	---
200	---	---	---	---	---	---	---	---	---	---
220	---	---	---	---	---	---	---	---	---	---
240	---	---	---	---	---	---	1414	---	---	---
250	---	---	---	---	---	---	---	---	---	---
260	---	---	---	---	---	---	1414	---	---	---
270	---	---	---	---	---	---	---	---	---	---
280	---	---	---	---	---	---	903	---	---	---
300	---	---	---	---	---	---	903	---	---	---
320	---	---	---	---	---	---	830	---	---	---
340	---	---	---	---	---	1414	830	---	1414	---
360	---	---	---	---	---	1414	801	---	1414	903
380	---	---	---	---	---	---	---	---	903	---
400	---	---	---	---	---	903	801	---	830	830
425	---	---	---	---	---	---	---	---	---	---
475	---	---	---	---	---	---	---	---	---	---
500	---	1405	---	1405	---	830	801	---	801	---
550	---	1405	---	1405	---	801	801	---	801	---
600	---	1405	---	1142	---	801	801	1414	700	---
650	---	1405	---	---	---	801	801	---	---	---
700	---	1142	---	---	---	801	700	---	---	---
800	1405	1142	---	---	---	801	700	---	---	---
900	1405	1142	---	---	---	801	700	---	---	---
1000	1405	1142	---	---	---	801	700	---	---	---



INNOPAINT

Peinture intumescente
Mono composant
A base aqueuse



PERFORMANCES - Extrait de EVALUATION TECHNIQUE EUROPEENNE - ETE 15/0146 19/03/2016

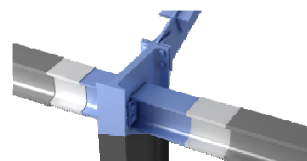
POUTRE - 4 faces - Profils H-I-U - Epaisseurs sèches appliquées (µm)

R90	POUTRE - 4 faces Exposées 600°C					POUTRE - 4 faces Exposées 650°C				
	HEA	HEB	IPE	IPN	UPE	HEA	HEB	IPE	IPN	UPE
80	---	---	---	---	---	---	---	---	---	---
100	---	---	---	---	---	---	1270	---	---	1438
120	---	---	---	---	---	---	1169	---	---	1323
130	---	---	---	---	---	---	---	---	---	---
140	---	---	---	---	---	1438	1118	---	---	1270
150	---	---	---	---	---	---	---	---	---	---
160	---	1408	---	---	---	1323	1017	---	1438	1219
175	---	---	---	---	---	---	---	---	---	---
180	---	1325	---	---	---	1323	967	---	1323	1169
200	---	1233	---	---	---	1219	916	---	1219	1118
220	---	1137	---	---	---	1169	866	1438	1169	1068
240	---	1040	---	---	1408	1068	815	1381	1068	1017
250	---	---	---	---	---	---	---	---	---	---
260	1408	1040	---	1408	---	1017	815	---	1017	---
270	---	---	---	---	1325	---	---	1323	---	967
280	1408	944	---	1325	---	1017	779	---	967	---
300	1233	944	---	1233	1137	916	779	1270	916	866
320	1137	848	---	1137	---	866	748	---	866	---
340	1040	848	---	1040	---	815	748	---	815	---
360	1040	782	---	1040	944	815	718	1118	815	779
380	---	---	---	944	---	---	---	---	779	---
400	944	782	1408	848	848	779	718	1017	748	748
425	---	---	---	---	---	---	---	---	---	---
475	---	---	---	---	---	---	---	---	---	---
500	848	745	1233	745	---	748	709	916	709	---
550	782	745	1137	745	---	718	709	866	709	---
600	782	745	1040	700	---	718	709	815	700	---
650	782	745	---	---	---	718	709	---	---	---
700	782	700	---	---	---	718	700	---	---	---
800	745	700	---	---	---	709	700	---	---	---
900	745	700	---	---	---	709	700	---	---	---
1000	745	700	---	---	---	709	700	---	---	---



INNOPAINT

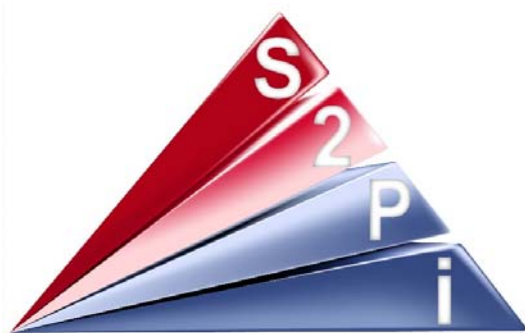
Peinture intumescente
Mono composant
A base aqueuse



PERFORMANCES - Extrait de EVALUATION TECHNIQUE EUROPEENNE - ETE 15/0146 19/03/2016

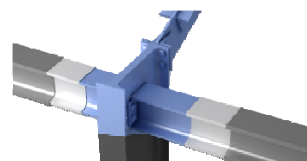
POTEAU - 4 faces - Profils H-I-U - Epaisseurs sèches appliquées (µm)

R30	POTEAU - 4 faces exposées 500°C					POTEAU - 4 faces exposées 550°C				
	HEA	HEB	IPE	IPN	UPE	HEA	HEB	IPE	IPN	UPE
80	---	---	---	---	362	---	---	---	---	221
100	362	336	---	---	356	221	221	---	---	221
120	368	322	---	390	343	221	221	---	221	221
130	---	---	---	---	---	---	---	---	---	---
140	356	314	---	368	336	221	221	---	221	221
150	---	---	---	---	---	---	---	---	---	---
160	343	297	390	356	329	221	221	221	221	221
175	---	---	---	---	---	---	---	---	---	---
180	343	289	380	343	322	221	221	221	221	221
200	329	279	368	329	314	221	221	221	221	221
220	322	270	356	322	306	221	221	221	221	221
240	306	260	350	306	297	221	221	221	221	221
250	---	---	---	---	---	---	---	---	---	---
260	297	260	---	297	---	221	221	---	221	---
270	---	---	343	---	289	---	---	221	---	221
280	297	249	---	289	---	221	221	---	221	---
300	279	249	336	279	270	221	221	221	221	221
320	270	238	---	270	---	221	221	---	221	---
340	260	238	---	260	---	221	221	---	221	---
360	260	226	314	260	249	221	221	221	221	221
380	---	---	---	249	---	---	---	---	221	---
400	249	226	297	238	238	221	221	221	221	221
425	---	---	---	---	---	---	---	---	---	---
475	---	---	---	---	---	---	---	---	---	---
500	238	221	279	221	---	221	221	221	221	---
550	226	221	270	221	---	221	221	221	221	---
600	226	221	260	221	---	221	221	221	221	---
650	226	221	---	---	---	221	221	---	---	---
700	226	221	---	---	---	221	221	---	---	---
800	221	221	---	---	---	221	221	---	---	---
900	221	221	---	---	---	221	221	---	---	---
1000	221	221	---	---	---	221	221	---	---	---



INNOPAINT

Peinture intumescente
Mono composant
A base aqueuse



PERFORMANCES - Extrait de EVALUATION TECHNIQUE EUROPEENNE - ETE 15/0146 19/03/2016

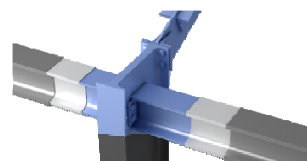
POTEAU - 4 faces - Profils H-I-U - Epaisseurs sèches appliquées (µm)

R30	POTEAU - 4 faces exposées 600°C					POTEAU - 4 faces exposées 650°C				
	HEA	HEB	IPE	IPN	UAP	HEA	HEB	IPE	IPN	UAP
80	---	---	---	---	221	---	---	---	---	221
100	221	221	---	---	221	221	221	---	---	221
120	221	221	---	221	221	221	221	---	221	221
130	---	---	---	---	---	---	---	---	---	---
140	221	221	---	221	221	221	221	---	221	221
150	---	---	---	---	---	---	---	---	---	---
160	221	221	221	221	221	221	221	221	221	221
175	---	---	---	---	---	---	---	---	---	---
180	221	221	221	221	221	221	221	221	221	221
200	221	221	221	221	221	221	221	221	221	221
220	221	221	221	221	221	221	221	221	221	221
240	221	221	221	221	221	221	221	221	221	221
250	---	---	---	---	---	---	---	---	---	---
260	221	221	---	221	---	221	221	---	221	---
270	---	---	221	---	221	---	---	221	---	221
280	221	221	---	221	---	221	221	---	221	---
300	221	221	221	221	221	221	221	221	221	221
320	221	221	---	221	---	221	221	---	221	---
340	221	221	---	221	---	221	221	---	221	---
360	221	221	221	221	221	221	221	221	221	221
380	---	---	---	221	---	---	---	---	221	---
400	221	221	221	221	221	221	221	221	221	221
425	---	---	---	---	---	---	---	---	---	---
475	---	---	---	---	---	---	---	---	---	---
500	221	221	221	221	---	221	221	221	221	---
550	221	221	221	221	---	221	221	221	221	---
600	221	221	221	221	---	221	221	221	221	---
650	221	221	---	---	---	221	221	---	---	---
700	221	221	---	---	---	221	221	---	---	---
800	221	221	---	---	---	221	221	---	---	---
900	221	221	---	---	---	221	221	---	---	---
1000	221	221	---	---	---	221	221	---	---	---



INNOPAINT

Peinture intumescente
Mono composant
A base aqueuse



PERFORMANCES - Extrait de EVALUATION TECHNIQUE EUROPEENNE - ETE 15/0146 19/03/2016

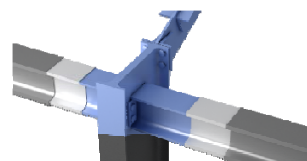
POTEAU - 4 faces - Profils H-I-U - Epaisseurs sèches appliquées (µm)

R60	POTEAU - 4 faces exposées 500°C					POTEAU - 4 faces exposées 550°C				
	HEA	HEB	IPE	IPN	UPE	HEA	HEB	IPE	IPN	UPE
80	---	---	---	---	1202	---	---	---	---	1098
100	1202	1091	---	---	1174	1098	989	---	---	1070
120	1230	1035	---	1342	1118	1125	934	---	1234	1016
130	---	---	---	---	---	---	---	---	---	---
140	1174	1007	---	1230	1091	1070	907	---	1125	989
150	---	---	---	---	---	---	---	---	---	---
160	1118	951	1342	1174	1063	1016	852	1234	1070	961
175	---	---	---	---	---	---	---	---	---	---
180	1118	923	1286	1118	1035	1016	825	1180	1016	934
200	1063	895	1230	1063	1007	961	797	1125	961	907
220	1035	867	1174	1035	979	934	768	1070	934	879
240	979	839	1146	979	951	879	738	1043	879	852
250	---	---	---	---	---	---	---	---	---	---
260	951	839	---	951	---	852	738	---	852	---
270	---	---	1118	---	923	---	---	1016	---	825
280	951	811	---	923	---	852	709	---	825	---
300	895	811	1091	895	867	797	709	989	797	768
320	867	779	---	867	---	768	679	---	768	---
340	839	779	---	839	---	738	679	---	738	---
360	839	743	1007	839	811	738	650	907	738	709
380	---	---	---	811	---	---	---	---	709	---
400	811	743	951	779	779	709	650	852	679	679
425	---	---	---	---	---	---	---	---	---	---
475	---	---	---	---	---	---	---	---	---	---
500	779	707	895	707	---	679	621	797	621	---
550	743	707	867	707	---	650	621	768	621	---
600	743	707	839	671	---	650	621	738	591	---
650	743	707	---	---	---	650	621	---	---	---
700	743	671	---	---	---	650	591	---	---	---
800	707	671	---	---	---	621	591	---	---	---
900	707	671	---	---	---	621	591	---	---	---
1000	707	671	---	---	---	621	591	---	---	---



INNOPAINT

Peinture intumescente
Mono composant
A base aqueuse



PERFORMANCES - Extrait de EVALUATION TECHNIQUE EUROPEENNE - ETE 15/0146 19/03/2016

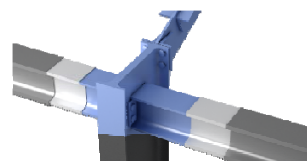
POTEAU - 4 faces - Profils H-I-U - Epaisseurs sèches appliquées (µm)

R60	POTEAU - 4 faces exposées 600°C					POTEAU - 4 faces exposées 650°C				
	HEA	HEB	IPE	IPN	UAP	HEA	HEB	IPE	IPN	UAP
80	---	---	---	---	1012	---	---	---	---	886
100	1012	899	---	---	984	886	743	---	---	861
120	1040	842	---	1153	927	912	591	---	1013	810
130	---	---	---	---	---	---	---	---	---	---
140	984	814	---	1040	899	861	574	---	912	743
150	---	---	---	---	---	---	---	---	---	---
160	927	757	1153	984	871	810	540	1013	861	648
175	---	---	---	---	---	---	---	---	---	---
180	927	728	1097	927	842	810	523	962	810	591
200	871	699	1040	871	814	648	506	912	648	574
220	842	670	984	842	786	591	489	861	591	557
240	786	641	955	786	757	557	472	836	557	540
250	---	---	---	---	---	---	---	---	---	---
260	757	641	---	757	---	540	472	---	540	---
270	---	---	927	---	728	---	---	810	---	523
280	757	612	---	728	---	540	455	---	523	---
300	699	612	899	699	670	506	455	743	506	489
320	670	590	---	670	---	489	438	---	489	---
340	641	590	---	641	---	472	438	---	472	---
360	641	572	814	641	612	472	421	574	472	455
380	---	---	---	612	---	---	---	---	455	---
400	612	572	757	590	590	455	421	540	438	438
425	---	---	---	---	---	---	---	---	---	---
475	---	---	---	---	---	---	---	---	---	---
500	590	555	699	555	---	438	404	506	404	---
550	572	555	670	555	---	421	404	489	404	---
600	572	555	641	537	---	421	404	472	387	---
650	572	555	---	---	---	421	404	---	---	---
700	572	537	---	---	---	421	387	---	---	---
800	555	537	---	---	---	404	387	---	---	---
900	555	537	---	---	---	404	387	---	---	---
1000	555	537	---	---	---	404	387	---	---	---



INNOPAINT

Peinture intumescente
Mono composant
A base aqueuse



PERFORMANCES - Extrait de EVALUATION TECHNIQUE EUROPEENNE - ETE 15/0146 19/03/2016

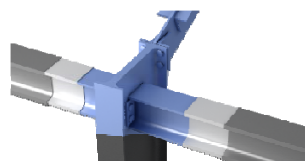
POTEAU - 4 faces - Profils H-I-U - Epaisseurs sèches appliquées (µm)

R90	POTEAU - 4 faces exposées 500°C					POTEAU - 4 faces exposées 550°C				
	HEA	HEB	IPE	IPN	UPE	HEA	HEB	IPE	IPN	UPE
80	---	---	---	---	---	---	---	---	---	886
100	---	---	---	---	---	---	743	---	---	861
120	---	---	---	---	---	---	591	---	1013	810
130	---	---	---	---	---	---	---	---	---	---
140	---	---	---	---	---	---	574	---	912	743
150	---	---	---	---	---	---	---	---	---	---
160	---	---	---	---	---	---	540	1013	861	648
175	---	---	---	---	---	---	---	---	---	---
180	---	---	---	---	---	---	523	962	810	591
200	---	---	---	---	---	---	506	912	648	574
220	---	---	---	---	---	---	489	861	591	557
240	---	---	---	---	---	---	472	836	557	540
250	---	---	---	---	---	---	---	---	---	---
260	---	---	---	---	---	---	472	---	540	---
270	---	---	---	---	---	---	---	810	---	523
280	---	---	---	---	---	---	455	---	523	---
300	---	---	---	---	---	---	455	743	506	489
320	---	---	---	---	---	---	438	---	489	---
340	---	---	---	---	---	1414	438	---	472	---
360	---	---	---	---	---	1414	421	574	472	455
380	---	---	---	---	---	---	---	---	455	---
400	---	---	---	---	---	1271	421	540	438	438
425	---	---	---	---	---	---	---	---	---	---
475	---	---	---	---	---	---	---	---	---	---
500	---	1405	---	1405	---	1129	404	506	404	---
550	---	1405	---	1405	---	986	404	489	404	---
600	---	1405	---	1142	---	986	404	472	387	---
650	---	1405	---	---	---	986	404	---	---	---
700	---	1142	---	---	---	986	387	---	---	---
800	1405	1142	---	---	---	843	387	---	---	---
900	1405	1142	---	---	---	843	387	---	---	---
1000	1405	1142	---	---	---	843	387	---	---	---



INNOPAINT

Peinture intumescente
Mono composant
A base aqueuse



PERFORMANCES - Extrait de EVALUATION TECHNIQUE EUROPEENNE - ETE 15/0146 19/03/2016

POTEAU - 4 faces - Profils H-I-U - Epaisseurs sèches appliquées (µm)

R90	POTEAU - 4 faces exposées 600°C					POTEAU - 4 faces exposées 650°C				
	HEA	HEB	IPE	IPN	UAP	HEA	HEB	IPE	IPN	UAP
80	---	---	---	---	---	---	---	---	---	---
100	---	---	---	---	---	---	1270	---	---	1438
120	---	---	---	---	---	---	1169	---	---	1323
130	---	---	---	---	---	---	---	---	---	---
140	---	---	---	---	---	1438	1118	---	---	1270
150	---	---	---	---	---	---	---	---	---	---
160	---	1408	---	---	---	1323	1017	---	1438	1219
175	---	---	---	---	---	---	---	---	---	---
180	---	1325	---	---	---	1323	967	---	1323	1169
200	---	1233	---	---	---	1219	916	---	1219	1118
220	---	1137	---	---	---	1169	866	1438	1169	1068
240	---	1040	---	---	1408	1068	815	1381	1068	1017
250	---	---	---	---	---	---	---	---	---	---
260	1408	1040	---	1408	---	1017	815	---	1017	---
270	---	---	---	---	1325	---	---	1323	---	967
280	1408	944	---	1325	---	1017	779	---	967	---
300	1233	944	---	1233	1137	916	779	1270	916	866
320	1137	848	---	1137	---	866	748	---	866	---
340	1040	848	---	1040	---	815	748	---	815	---
360	1040	782	---	1040	944	815	718	1118	815	779
380	---	---	---	944	---	---	---	---	779	---
400	944	782	1408	848	848	779	718	1017	748	748
425	---	---	---	---	---	---	---	---	---	---
475	---	---	---	---	---	---	---	---	---	---
500	848	745	1233	745	---	748	709	916	709	---
550	782	745	1137	745	---	718	709	866	709	---
600	782	745	1040	700	---	718	709	815	700	---
650	782	745	---	---	---	718	709	---	---	---
700	782	700	---	---	---	718	700	---	---	---
800	745	700	---	---	---	709	700	---	---	---
900	745	700	---	---	---	709	700	---	---	---
1000	745	700	---	---	---	709	700	---	---	---